



| floor plans roble

The images shown are the closest possible approximation of the final result of the projected building. Modifications may be made due to technical or legal requirements, provided that they are justified and do not involve a substantial alteration of the object and/or quality of the materials.

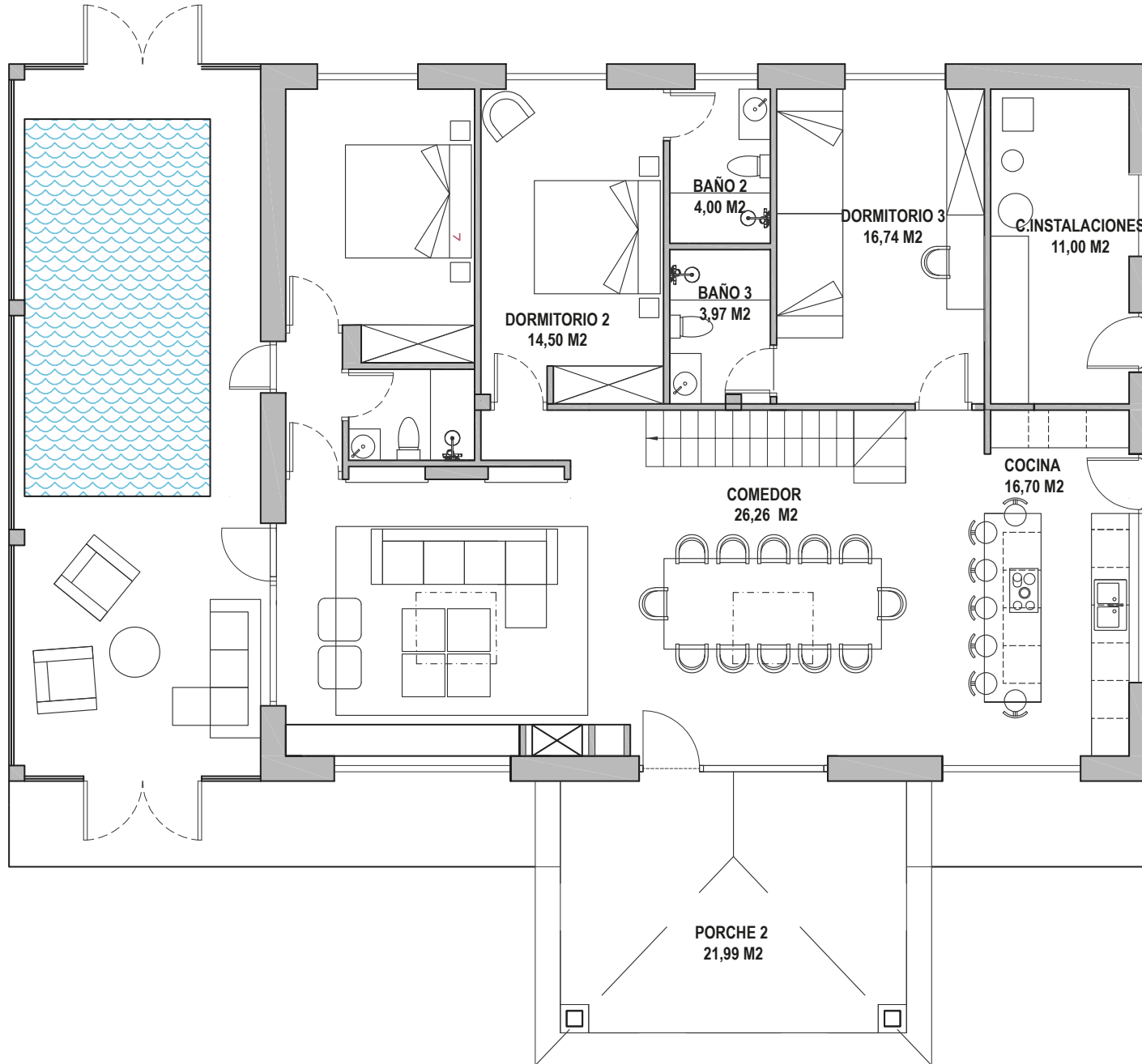
All information and documentation will be provided in accordance with the provisions of Royal Decree 515/1989, of 21 April, and other regulations that may complement it, whether of a state or regional nature.

We present the floor plans of our villa Roble in Caviedes, Cantabria.

Each of these unique and incomparable houses has been designed in detail with the utmost care and attention to create an ideal space for family living. The detailed floor plans reflect the quality and care we have put into every stage of the project process.

The plans will allow you to visualise the layout of the rooms, the spaciousness of the common areas, and all the details that will make these homes a place to enjoy with the family..

| ground floor



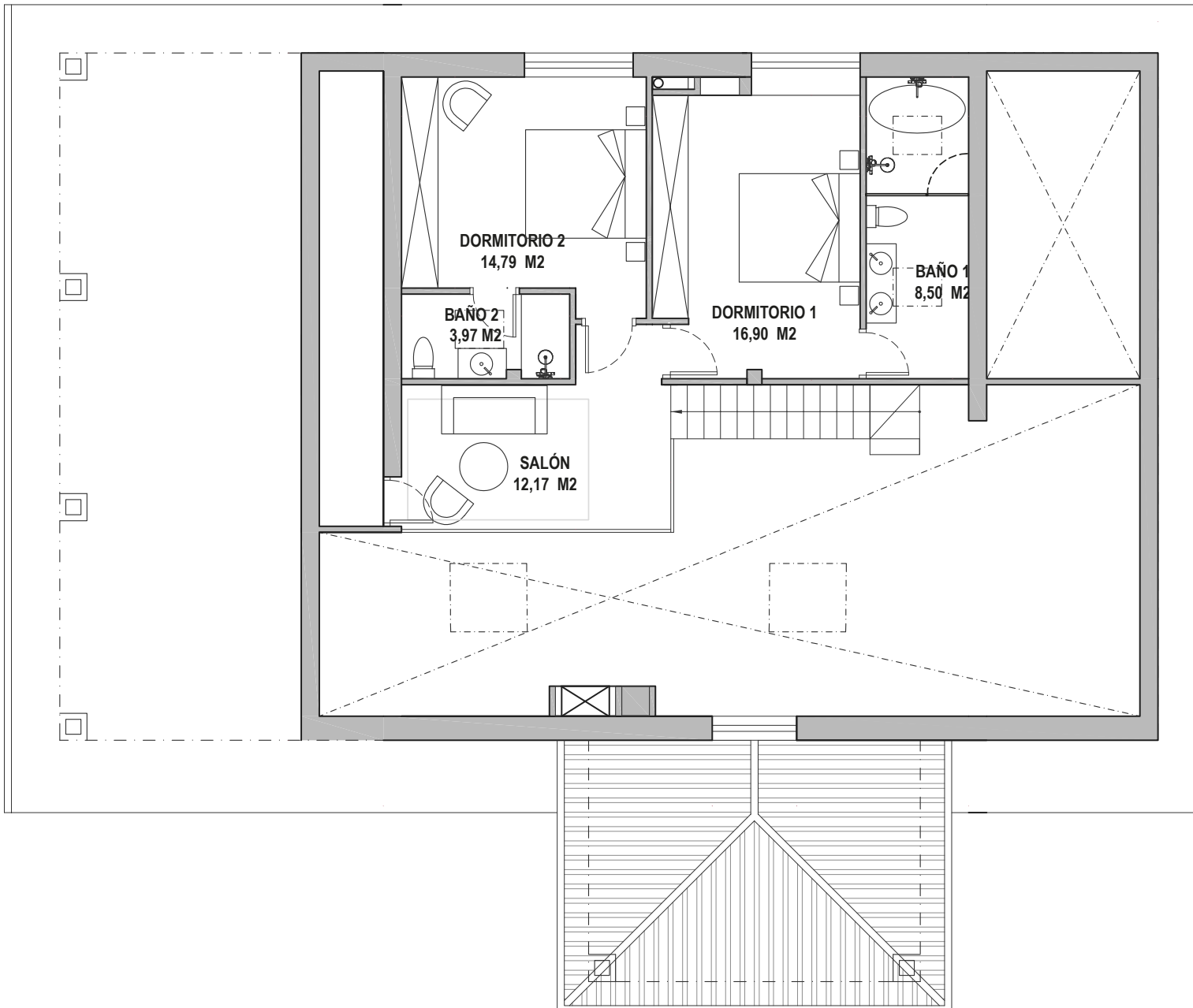
Entrance porch	21,99 m ²
Living room	26,10 m ²
Kitchen	16,70 m ²
Dining room	26,26 m ²
Staircase	4,21 m ²
Hall 1	2,21 m ²
Utility room	11,00 m ²
Bedroom 1	12,70 m ²
Bathroom 1	2,99 m ²
Bedroom 2	14,50 m ²
Bathroom 2	4,00 m ²
Hall 2	2,03 m ²
Bedroom 3	16,74m ²
Bathroom 3	3,97m ²
Porch 2	45,60 m ²

Usable ground floor area	211,00 m ²
Usable floor area 1	59,54 m ²
Total usable area	270,54 m ²

Built-up area ground floor	229,47 m ²
Built-up area floor 1	62,76 m ²
Total floor area	292,23 m ²



| first floor



Stairways	3,31 m2
Living room	12,17m2
Bedroom 1	16,90 m2
Bathroom 1	8,50 m2
Bedroom 2	14,79 m2
Bathroom 2	3,97 m2

Usable ground floor area	211,00 m2
Usable floor area 1	59,54 m2
Total usable area	270,54 m2

Built-up area ground floor	229,47 m2
Built-up area floor 1	62,76 m2
Total floor area	292,23 m2



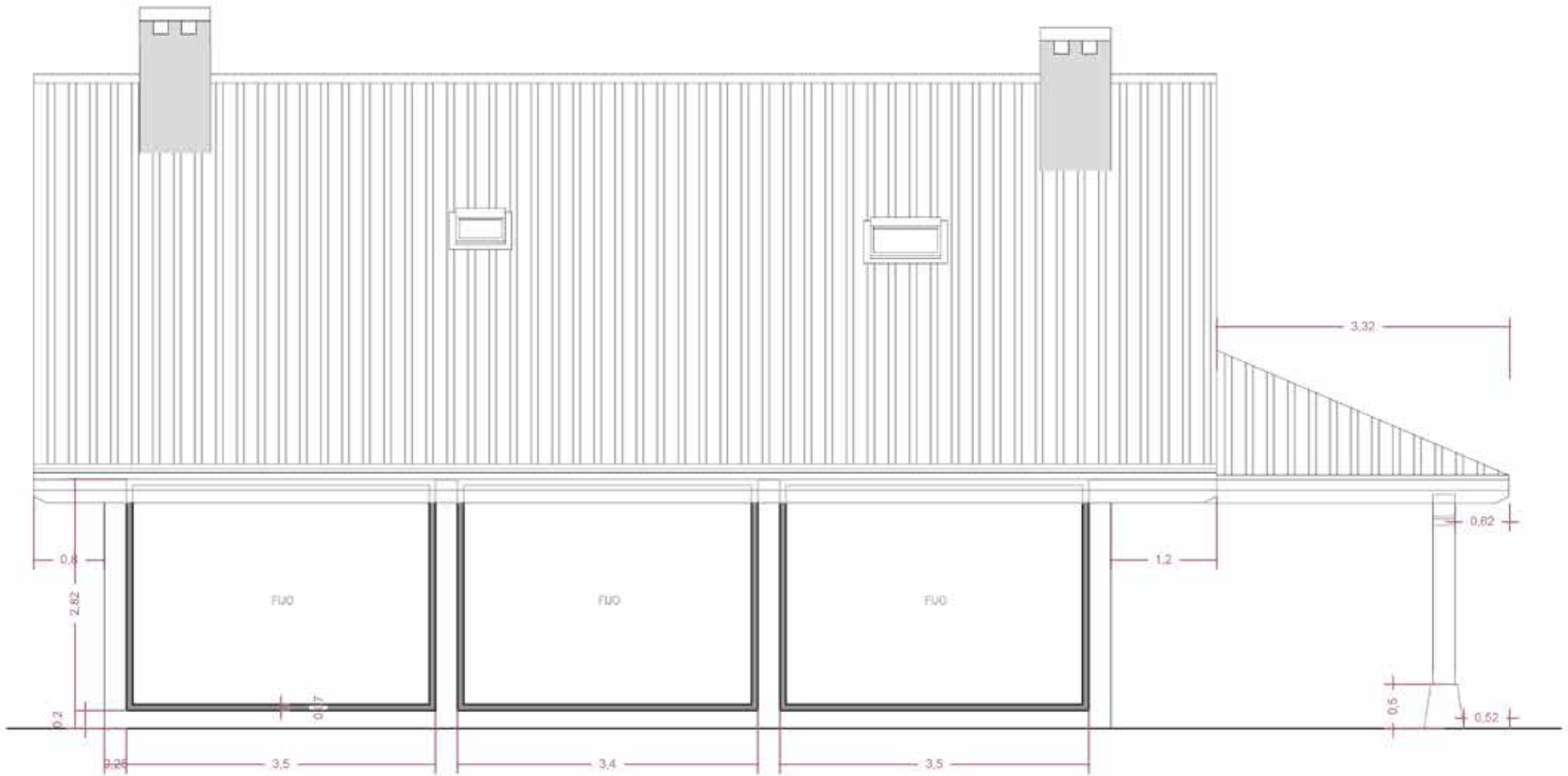


| elevations

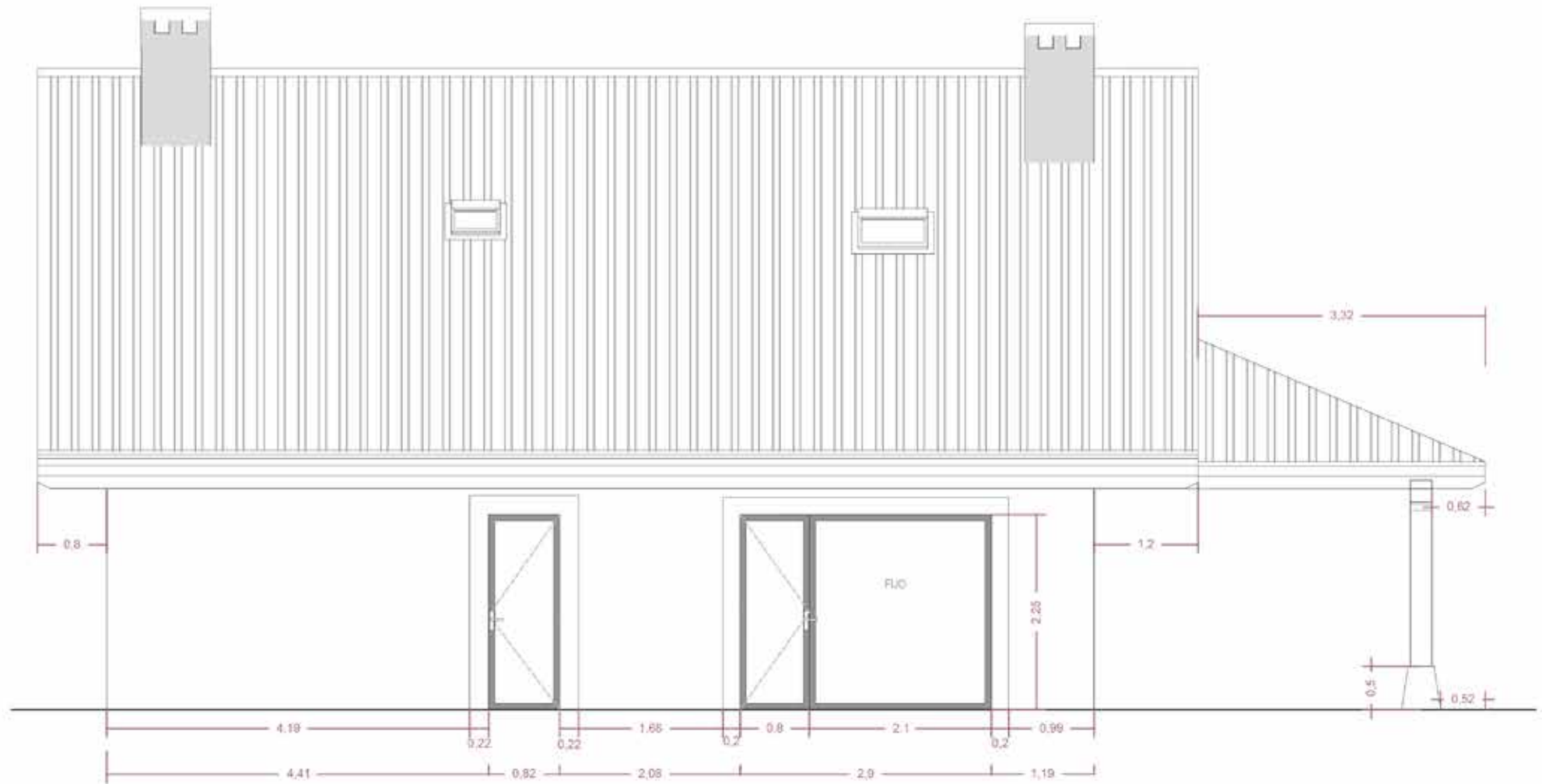
| southwest elevation



| exterior southeast elevation



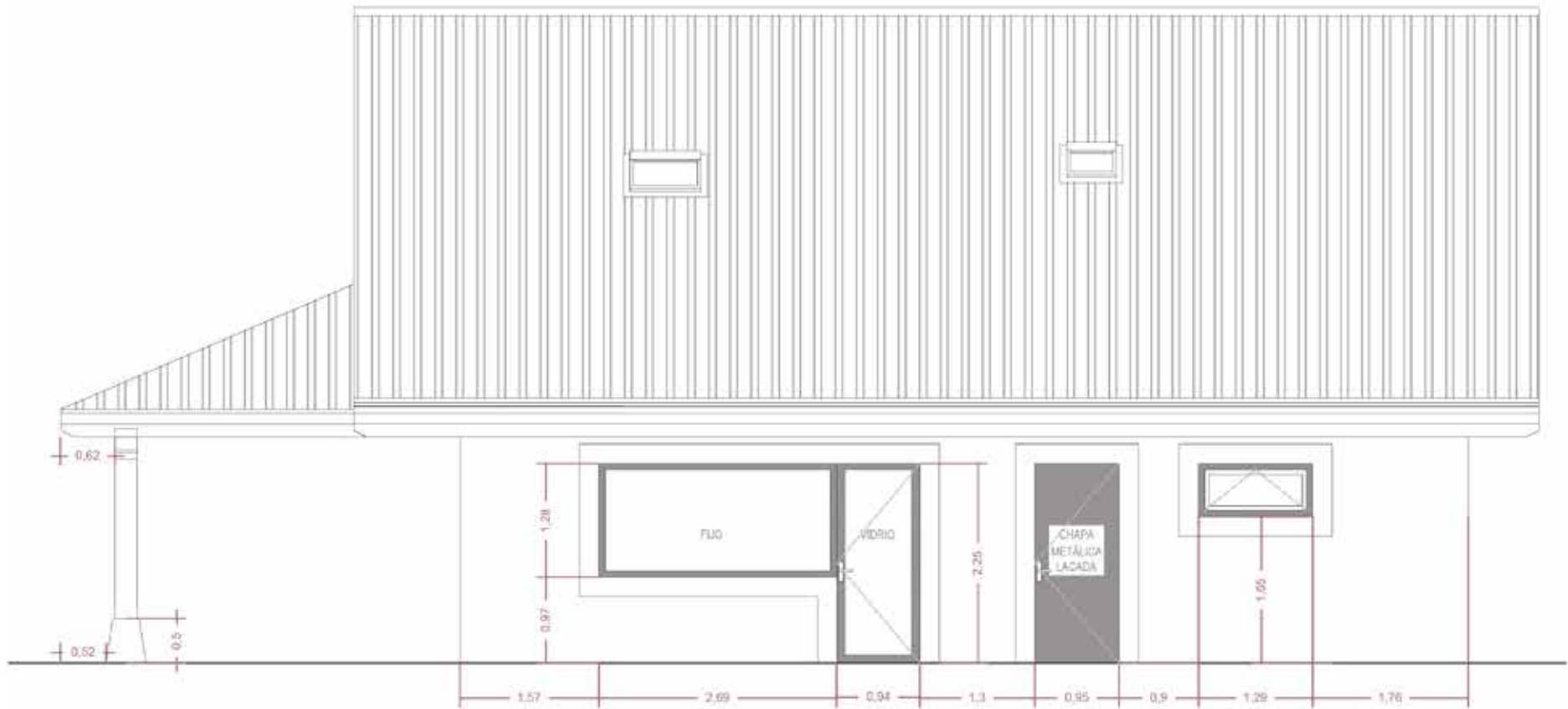
| interior southeast elevation

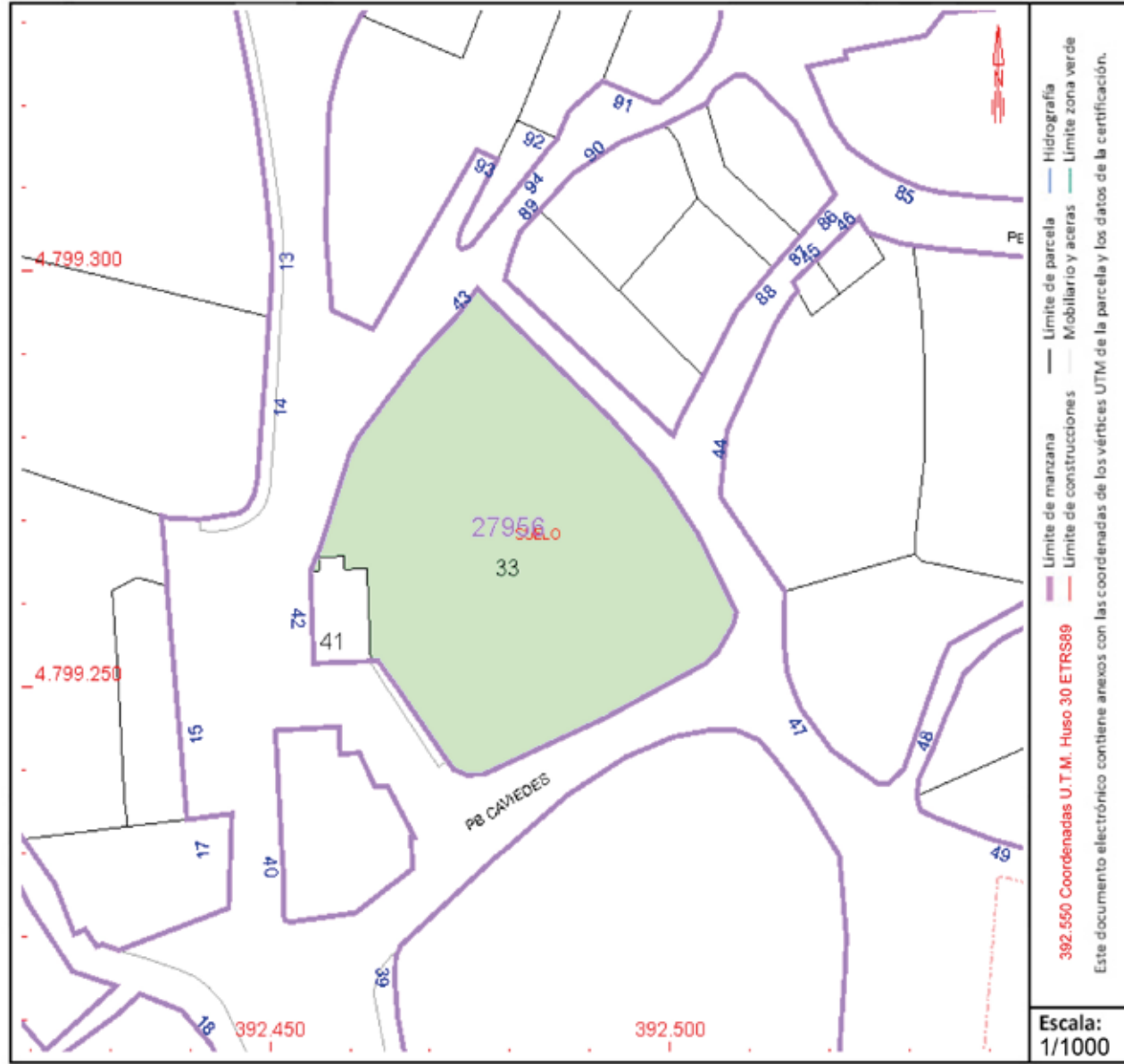


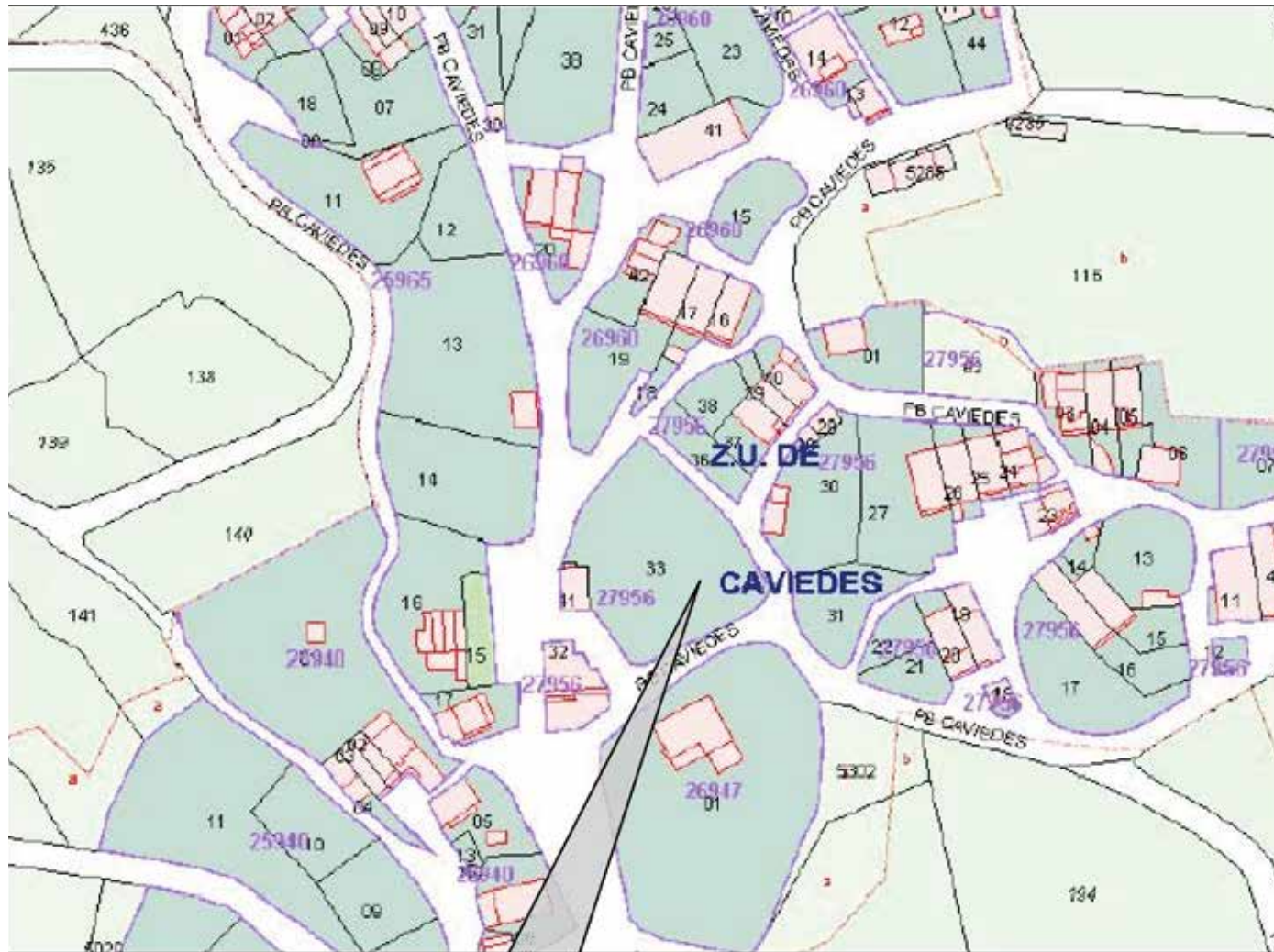
| northwest elevation



| northeast elevation







EMPLAZAMIENTO

